

Chomp2 User Guide

Chomp2 enables writers to compose several related topics in one document and then later, break them down into smaller chunks.

Chomp2 also comes in handy converting long legacy documents into smaller .xml topics. First you add structure to your document, then you chunk.

You choose how Chomp2 breaks up your .xml file. Chomp2 can pull out elements of the type you specify, and convert them to stand-alone .xml files. Parent elements have the specified child elements removed, ready to link to the new stand-alone .xml files.

Chomp2 is simple and benign. Your source file remains untouched. The easiest way to start using Chomp2 is to take an xml file and start experimenting. If you like, you can experiment with the .xml file included in the Chomp2 zip file.

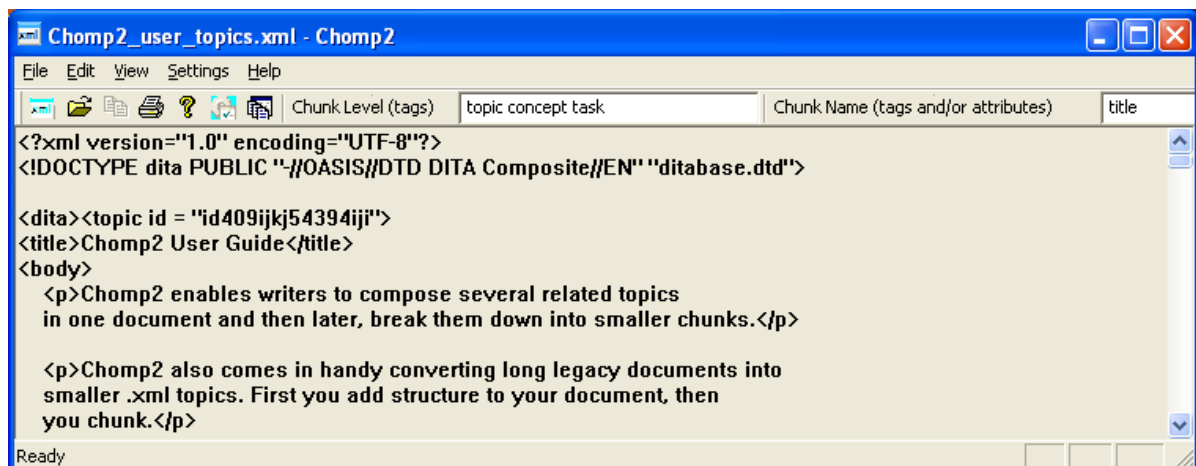
You can find the latest information about Chomp2 at the SlantAlpha web site:

<http://www.slantalpha.com>

Process overview

Here's an overview of what you do:

- From Chomp2, open the .xml file.
- Specify the elements you want to chunk to.
You can list multiple elements, such as topic, concept, and task.
- Optional: Set up how to name the new .xml files.
- Optional: Enter text to be inserted at the opening and closing of each new .xml file.
- Choose where to save your new files.
You can choose to save all the new files in one folder, or choose to create a new folder for each element type.
- Start chunking.



Setting up your Chomp2 license

You can try out the fully-functional version of Chomp2 for free for two weeks.

IMPORTANT: Chomp2's licensing method locks Chomp2 to your computer. This means that you cannot share your copy of Chomp2's license with any other computer. We are keeping Chomp2's price very low, because we understand that you may need to purchase several licenses if you own several computers.

Steps:

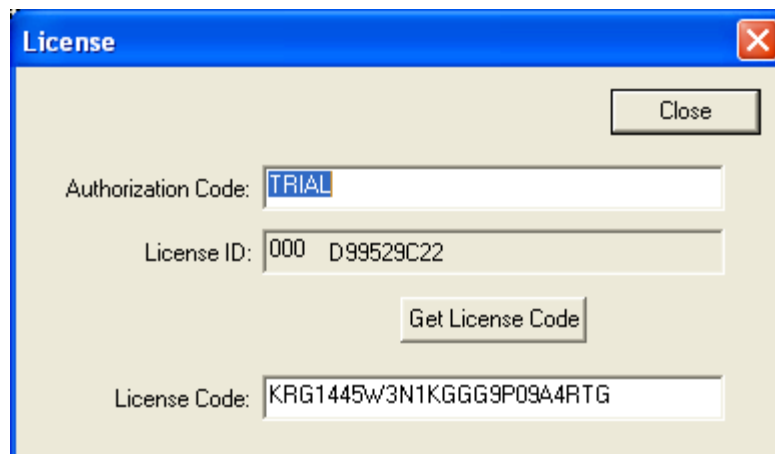
1. From the **Help** menu, select **About Chomp2**.

The About Chomp2 dialog box appears.



2. Click the **License** button.

The License dialog box appears.



3. Click **Get License Code**, then **OK**, **Close**, and **OK**.

RESULT:

You are ready to start using this fully-functional try-out version.

Selecting an .xml file

Choose a method to open your source .xml file:

Step:

- ❖ Open Chomp2 and drag and drop the .xml file into it.
- ❖ Or... Hold down the **CTRL** key and press the **O** key.
- ❖ Or... From the **File** menu, click **Open** and browse to the .xml file.

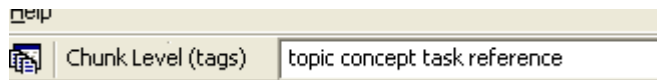
Selecting the chunk level

You can choose any element to chunk to.

Step:

- ❖ In the **Chunk Level (tags)** field, type in the name of the element (or elements) level you want to chunk to.

If you want to chunk at several elements, separate each name with a space.



NOTE: Be sure to use correct spelling and case.

File-naming strategy

You have several options for naming each new .xml file:

- A) Do nothing, and use the default naming system.
- B) Assign an element or attribute as a file name.
- C) Use A or B above, plus append the current source file to the new .xml file name.
- D) Use A or B above method, plus append any text you want.
- E) Use any above method, plus append the element name.

Specifying each new .xml file name

(Optional)

Step:

- ❖ You can do nothing, and by default Chomp2 will assign numbers as file names, starting with 0001.xml
- ❖ Or you can designate an element whose content will be used as the file name, or designate an attribute whose value will be used as the file name:
In the **Chunk Name (tags and/or attributes)** field, type in the name of the attribute or element.

For instance, you can use the *title* element, or the *id* attribute.

The element or attribute you use must reside within the element whose level you are chunking to.

Chunk Name (tags and/or attributes)	title
-------------------------------------	-------

NOTE: Choose an element or attribute that is unique. If Chomp2 should find duplicate values, Chomp2 appends a number to the file name. For example:

About_Setup.xml

About_Setup.xml(2).xml

Adding a prefix to the new .xml file names

(Optional)

Besides specifying a how to uniquely name each new file, you can add prefixes

Step:

- ❖ Click the Settings menu, and in the Settings dialog box, check **Add a prefix to each chunk file name**, and choose a prefix option:

Prefix option	Result
A. Check Use the filename of the source file as the prefix	If the source .xml file is named <i>“userguide”</i> , and you select the title element to name the file: userguide_setting_options.xml userguide_selecting_files.xml
B. In the Prefix field, type in your own prefix	If you entered <i>“my_very_own_prefix”</i> , and you select the title element to name the file: my_very_own_prefix_setting_options my_very_own_prefix_selecting_files.xml

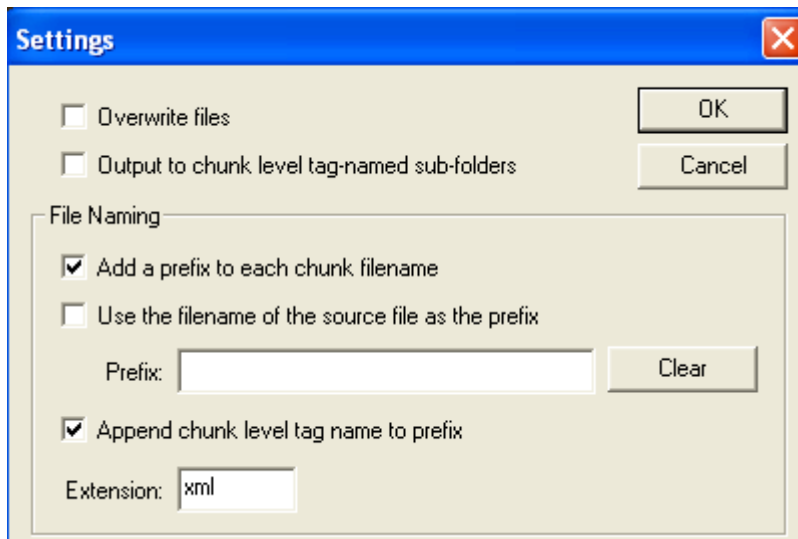
Appending an element name to a file name

(Optional)

In addition to (or instead of) adding a prefix, you can append the element name of the new chunk file.

Step:

- ❖ Click the **Settings** menu, and in the Settings dialog box:
 - a Check **Add a prefix to each chunk file name**.
 - b Check **Append chunk level tag name to prefix**.



RESULT:

If on the main screen, you entered *title* to be used as a file name, and selected **Use the filename of the source file** as the prefix, you would get file names such as these:

- **task**_Chunking_your_file.xml
- **concept**_Process_overview.xml
- **topic**_File_naming_strategy

Adding opening and closing text to each file automatically

By default, Chomp2 adds this element to the top of each new .xml file:

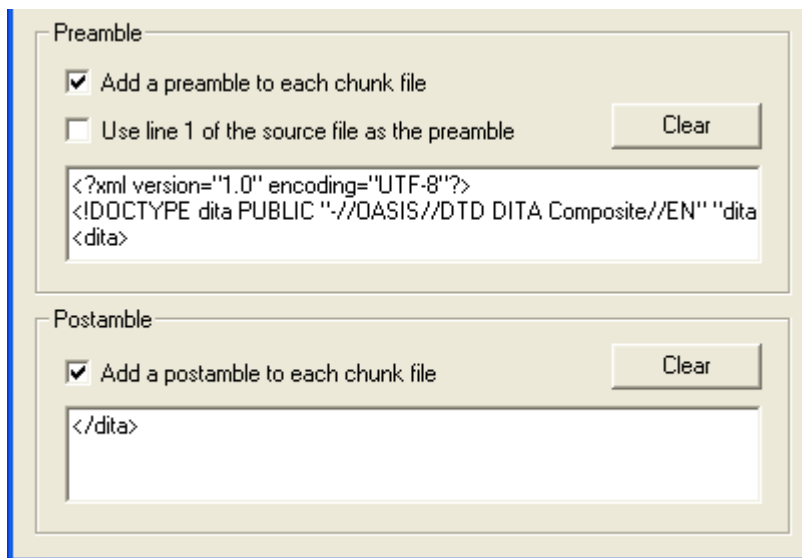
```
<?xml version="1.0" encoding="UTF-8"?>
```

You can edit or delete this text, or add any text you want.

You can also add text that will be added to the end of each new .xml file.

Steps:

1. Click the **Settings** menu.
The Settings dialog box appears.
2. In the **Preamble** and **Postamble** fields, make the changes you want.



The screenshot shows a dialog box with two sections: Preamble and Postamble. The Preamble section has a checked checkbox for 'Add a preamble to each chunk file' and an unchecked checkbox for 'Use line 1 of the source file as the preamble'. A 'Clear' button is to the right of the second checkbox. Below these is a text area containing the XML preamble:

```
<?xml version="1.0" encoding="UTF-8"?>
<!DOCTYPE dita PUBLIC "-//OASIS//DTD DITA Composite//EN" "dita
<dita>
```

 The Postamble section has a checked checkbox for 'Add a postamble to each chunk file' and a 'Clear' button to its right. Below is a text area containing the closing tag:

```
</dita>
```

3. Click OK.

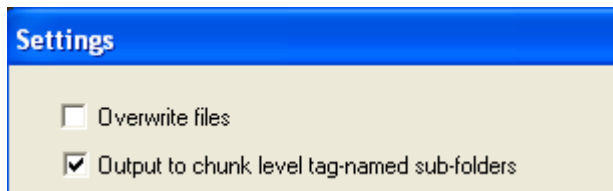
Setting up separate output folders

By default, Chomp2 stores your new .xml files in one folder.

You can set up Chomp2 to create subfolders named by the element chunk level, thus organizing your new .xml files by element type.

Step:

- ❖ Click Settings, and in the Settings dialog box, check **Output to chunk level tag-named sub folders** in the **Settings** dialog box.



NOTE: Be careful using this feature if you have xrefs that will break. Chomp2 preserves all hrefs as they are in the source .xml.

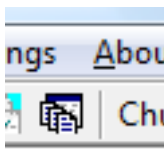
Chunking your file

You are ready to chunk after you have:

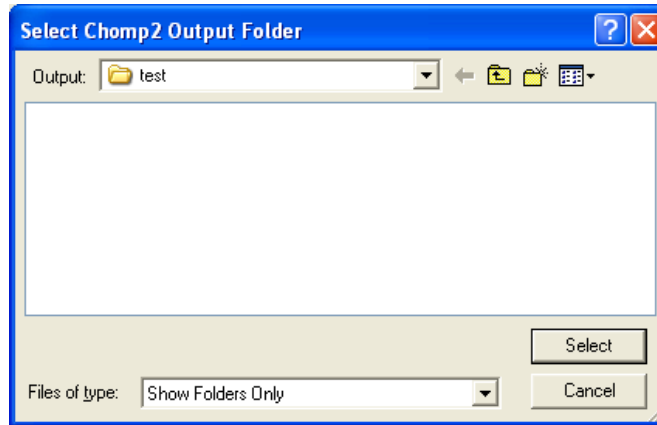
- Selected the level to chunk to.
- Set up how you want your new .xml files named.
- Added any opening and closing text you want for each file.

Steps:

1. Click on the **Process** icon.



The Select Chomp2 Output Folder dialog box appears.

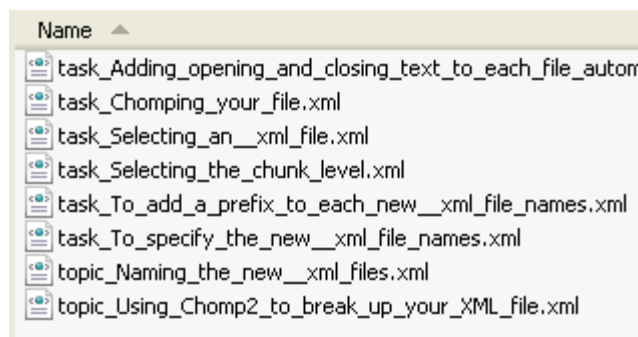


2. Browse to where you want to place the new .xml files and click **Select**.

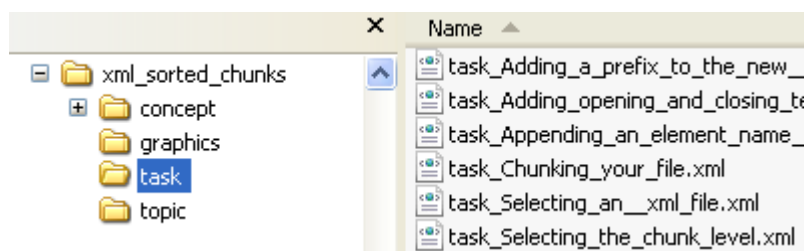
RESULT:

Your source .xml file is broken into the new .xml files as you specified.

File explorer view of the new .xml files (by default, the files are in one folder)



File explorer view of the new .xml files in separate folders



NOTE: To avoid broken links to graphics, move a copy of your image folder to the same hierarchical relationship to your new .xml files as the source .xml file's relationship has with its image folder. Chomp2 preserves all hrefs as they are in the source .xml.

Related information:

See [“Appending an element name to a file name” on page 5.](#)

See [“Setting up separate output folders” on page 7.](#)